

HCB
HodderCrews
FOR SALE
Enquire today
for more details

HCB
HodderCrews
HOME 29
FOR SALE

£291,000
Hodthorpe, Worksop,



Welcome to **BuckleyBrown**, where every home is carefully presented, so you can explore with clarity and confidence.

BuckleyBrown
ESTATE AGENTS

"This impressive residence has been carefully assessed and is presented to a high standard throughout, showcasing a superb combination of space, quality, and modern living. Thoughtfully maintained and well laid out, it offers a comfortable and versatile environment suited to a range of lifestyles."

- Jon, Director



CONTEMPORARY HOME WITH SPACE TO GROW

A stylish and move-in ready home set across three well-planned floors.

From the moment you arrive, this three-storey semi-detached home stands out with its well-presented exterior and welcoming feel. Offering three bedrooms and move-in ready accommodation arranged over three floors, the property provides a great balance of comfort, practicality, and versatile living space, making it an ideal choice for a range of buyers.



THE FINER DETAILS

A well-presented and spacious home offering versatile living throughout.

The ground floor offers a spacious lounge alongside an open-plan kitchen and dining area, creating a practical and sociable living space. French doors open out to the rear garden bringing the outside inside, while a convenient WC completes the layout.

On the first floor, there are two generously sized bedrooms served by a family bathroom, providing comfortable accommodation for family or guests. The second floor is dedicated to the main bedroom, which benefits from its own en suite and a dressing room, offering a private and well-appointed retreat.

Outside, the property features a private driveway and garage to the front, while the rear boasts a well-established lawn, ideal for outdoor use and relaxation all year round.





BuckleyBrown
ESTATE AGENTS







LIFE IN HODTHORPE

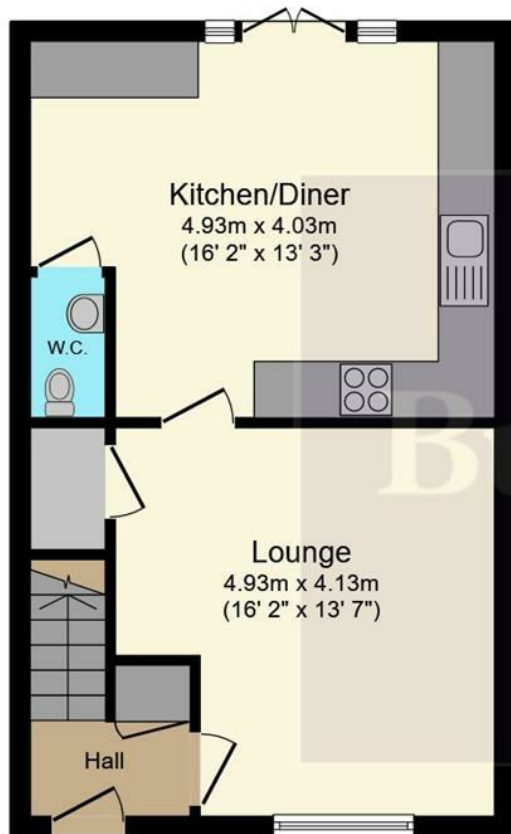
Hodthorpe is a small and well-established village located on the Nottinghamshire and Derbyshire border, offering a peaceful residential setting with a close-knit community feel. Its semi-rural position makes it particularly appealing to buyers seeking a quieter lifestyle while still remaining within easy reach of larger towns and key amenities.

The village itself provides a selection of everyday conveniences, including local shops, schools, and traditional pubs, with a strong sense of community at its core. For a wider range of retail, dining and leisure options, nearby towns such as Worksop and Chesterfield are easily accessible, ensuring residents can enjoy both village charm and modern convenience.

Surrounded by open countryside, Hodthorpe is well suited to those who enjoy outdoor living. The area offers a variety of walking and cycling routes, along with nearby parks and green spaces that provide opportunities for relaxation and recreation in a natural setting.

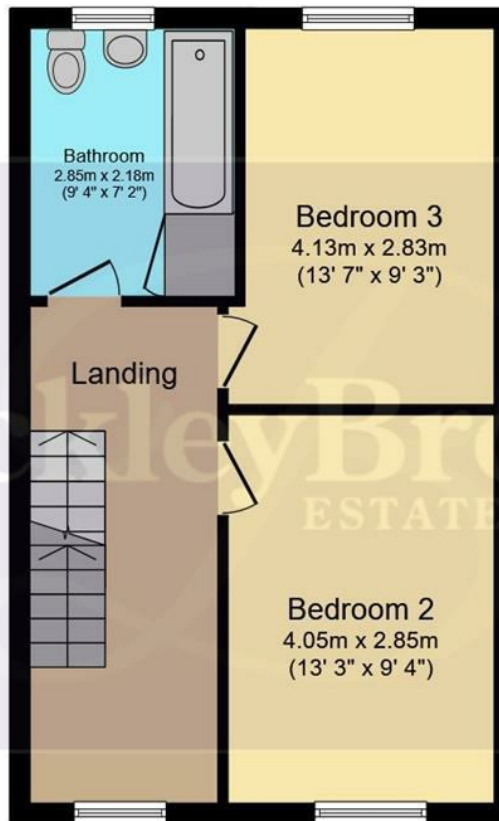
Despite its rural feel, Hodthorpe benefits from good transport connections. The nearby road network, including the A619 and access to the M1, allows for convenient travel to Sheffield, Chesterfield and beyond. This makes the village a practical choice for commuters looking to balance work with a more peaceful home environment.





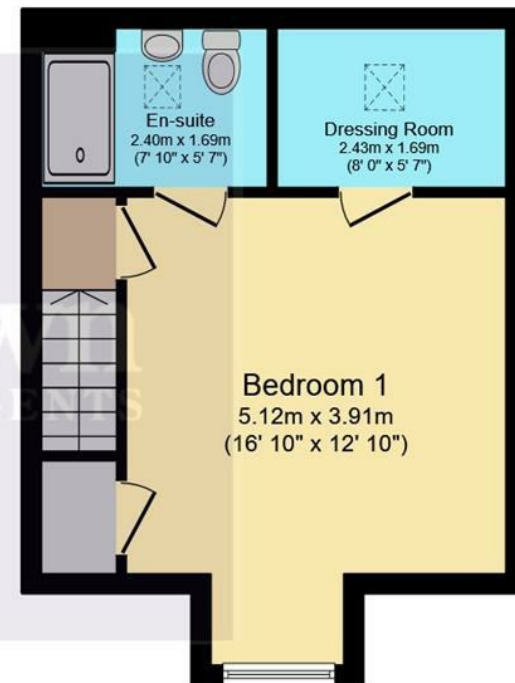
Ground Floor

Floor area 40.6 sq.m. (437 sq.ft.)



First Floor

Floor area 40.6 sq.m. (437 sq.ft.)



Second Floor

Floor area 29.9 sq.m. (322 sq.ft.)

Total floor area: 111.1 sq.m. (1,195 sq.ft.)

This floor plan is for illustrative purposes only. It is not drawn to scale. Any measurements, floor areas (including any total floor area), openings and orientations are approximate. No details are guaranteed, they cannot be relied upon for any purpose and do not form any part of any agreement. No liability is taken for any error, omission or misstatement. A party must rely upon its own inspection(s). Powered by www.Propertybox.io

These particulars are intended as a guide only and do not form part of any offer or contract. All descriptions, measurements, images and plans are provided for illustration purposes and should not be relied upon as statements of fact. Prospective purchasers should satisfy themselves as to the accuracy of the information. Buckley Brown Estate Agents accept no liability for any loss arising from reliance on these details.

© Buckley Brown Estate Agents 2026. All rights reserved.

Exceptional homes deserve
exceptional representation.

Let's Chat.

01246 605121

bolsover@buckleybrown.co.uk

[buckleybrown.co.uk](https://www.buckleybrown.co.uk)

BuckleyBrown
ESTATE AGENTS